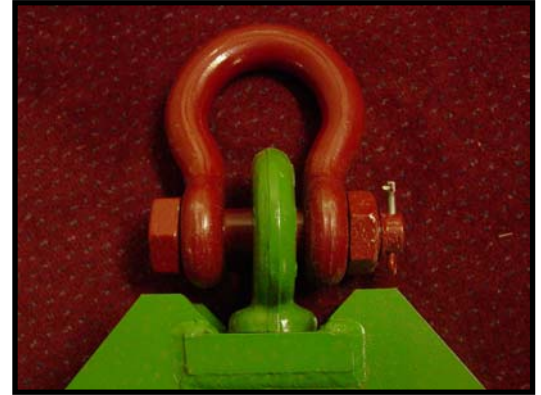
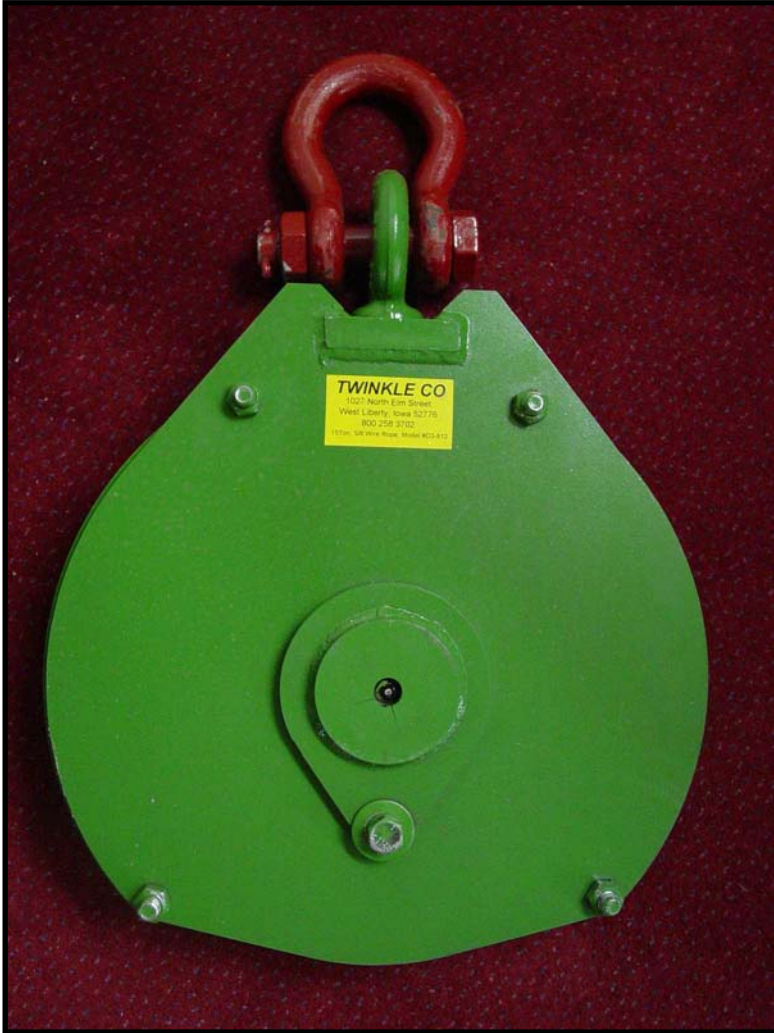


MOAB Swing Block



Extreme duty swivel & shackle



Replaceable cable guides



Extreme duty shaft with recessed grease zerks.

15 Ton rating

16" OD sheave

Wire rope sizes from 1/2" to 1-1/8"

MOAB (Multiple Operating Angle Block) is designed for use in the demanding environment of dredge position cables. They work equally well above or below water. Sheave cable surfaces are flame hardened for long life. The extreme duty shaft is fitted with a recessed grease zerk in each end to allow greasing regardless of mounting angle. The replaceable cable guides insure that slack cable will not wedge between the sheave and the block side plates, preventing damage to the cable and the block. Modular design allows blocks to be quickly assembled from stock components for fast delivery. Approximate weight per block is 165 pounds.

TWINKLE CO

West Liberty, Iowa MOAB 800-258-3702

www.twinkleco.com