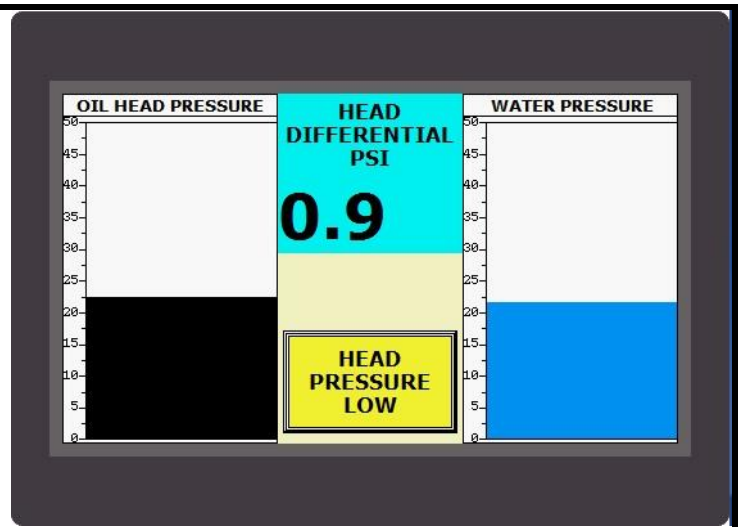
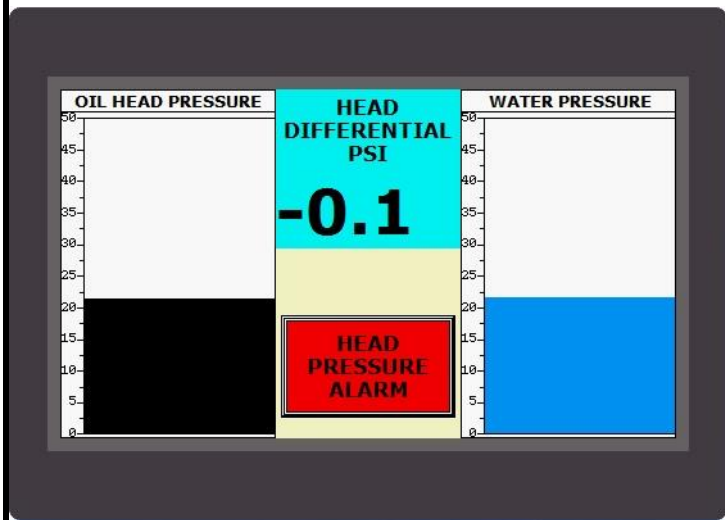


HEADHAWK display - Normal mode with oil head pressure at least 1 psi greater than the ambient water pressure



HEADHAWK display - Warning mode with oil head pressure positive, but less than 1 psi greater than the ambient water pressure



HEADHAWK display - Alarm mode with oil head pressure equal to or less than the ambient water pressure



HEADHAWK sensor housing to be mounted near the submerged housing that is to be monitored

## HEADHAWK - A system to measure and monitor oil head pressure

A positive head differential pressure must be maintained to prevent water intrusion in submerged housings such as cutter drive gearboxes and ladder mounted pump bearings. Water intrusion leads to failure and costly repairs. The damage can be prevented if the negative head differential is detected and corrected. HEADHAWK makes early detection possible.

The main components of the HEADHAWK system are a display unit with a 4" color touchscreen and a sensor housing. The oil head pressure (black) is displayed on the left side and the ambient water pressure (blue) is displayed on the right side of the touchscreen. A digital readout shows the pressure differential and color-changing status lights indicate the status of the pressure differential. Green indicates a positive differential of at least 1 psi, Yellow indicates a positive pressure less than 1 psi and Red flashing indicates an equal or negative differential pressure.

**TWINKLE CO**

headhawk

TWINKLE CO  
West Liberty, IA  
319 627 6655 • twinkleco.com