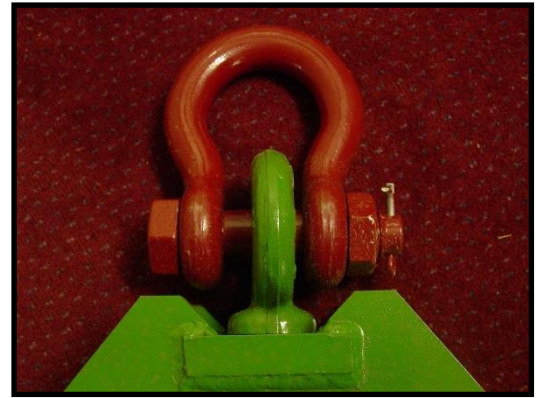
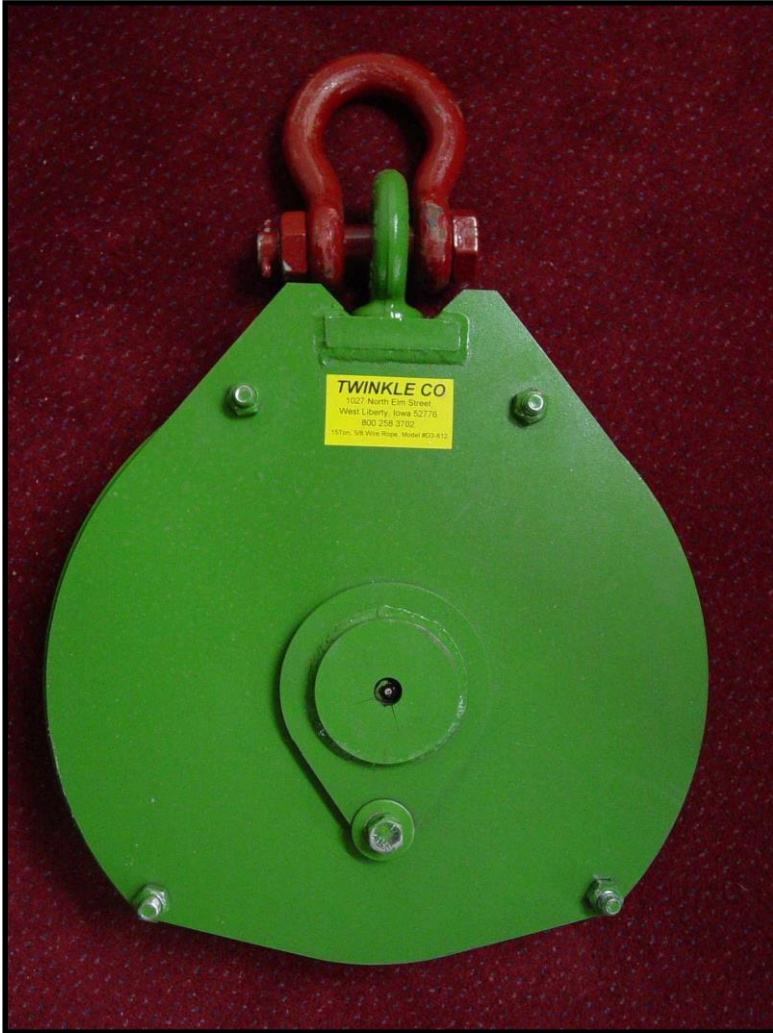


# MOAB Dredge Block



**Extreme-duty swivel & shackle**



**Replaceable cable guides**

**15 Ton rating**

**16" OD sheave**

**Wire rope sizes from 1/2" to 1-1/8"**



**Extreme-duty shaft with recessed grease zerks.**

MOAB (Multiple Operating Angle Block) is designed for use in the demanding environment of dredge positioning cables. MOAB works equally well above or below water. Sheave cable grooves are flame hardened for long life. The extreme-duty shaft is fitted with a recessed grease zerker in each end to allow greasing regardless of mounting angle. The replaceable cable guides insure that slack cable will not wedge between the sheave and the block side plates, preventing damage to the cable and the block. Modular design allows blocks to be quickly assembled from stock components for fast delivery and easy repair. Approximate weight per block is 165 pounds.

**TWINKLE CO**

moab

**TWINKLE CO**  
West Liberty, IA  
319 627 6655 • [twinkleco.com](http://twinkleco.com)